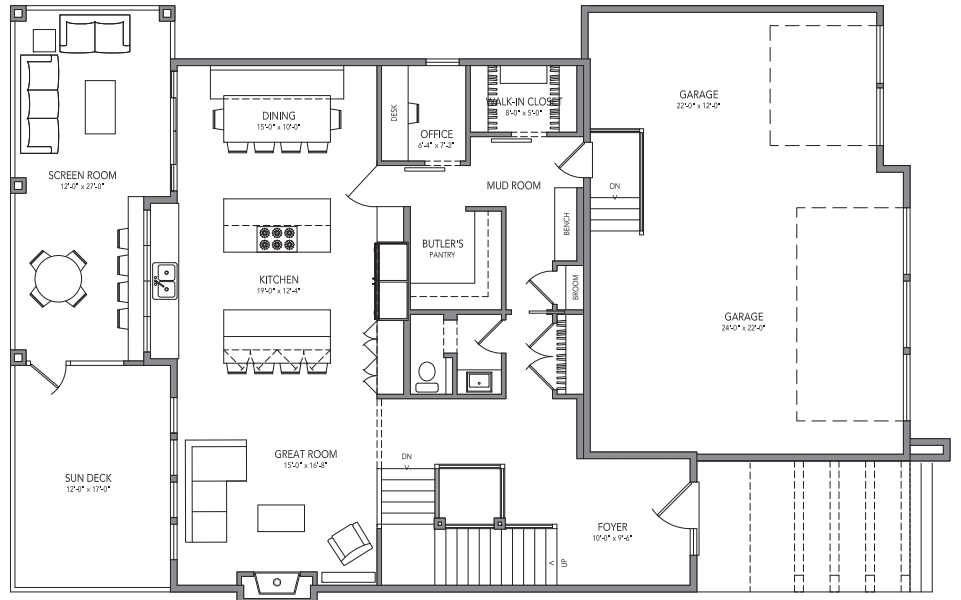


69 Larratt Close

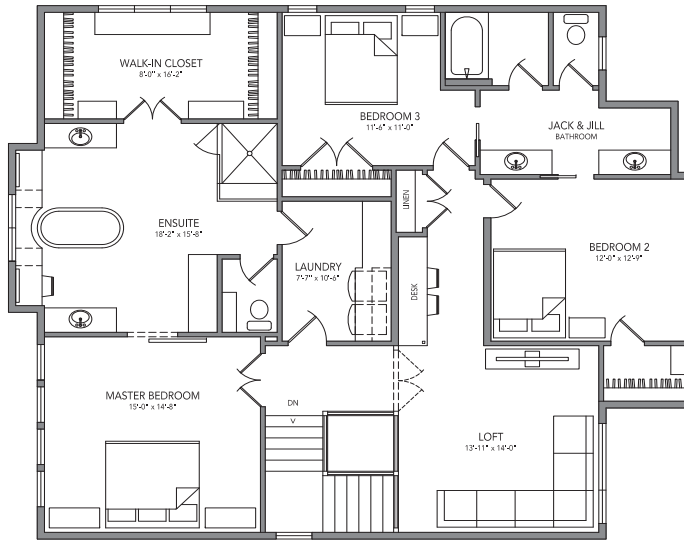


- 🏠 Two-Storey
- 📏 3,009 SF + BSMT
- 🛏️ 4 Bedrooms
- 🚿 3.5 Bathrooms
- ➡️ 44' Wide

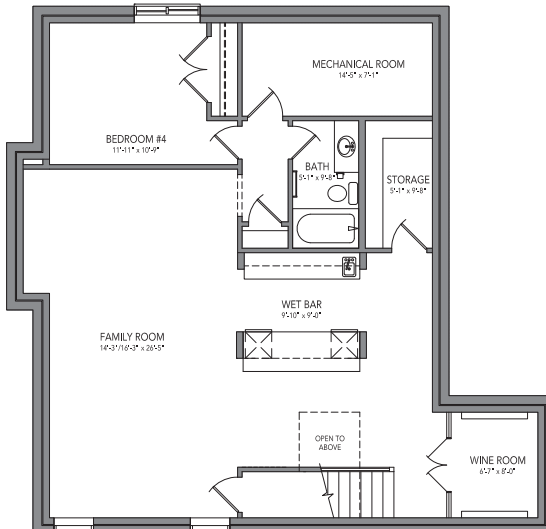
- Modern Front Elevation
- Triple Attached Garage
- Large windows throughout providing ample daylight
- Urban Industrial inspired design
- Large chef kitchen with double islands
- Oversized pantry with fridge
- Large enclosed sunroom off kitchen
- Accordion glass wall in kitchen to serve in enclosed sunroom
- Pocket den off on main floor off kitchen
- Exposed Chicago brick accents
- Bonus room with glass wall and wrought iron grid accents
- Large master ensuite with freestanding tub and custom tile shower
- Laundry attached to master ensuite with access to main living area
- Basement wet bar with lots of storage, bar fridge, dishwasher & TV outlets
- Industrial designed wine room
- Infloor heat completed in both basement and garage



MAIN FLOOR 1,369 SF



UPPER FLOOR 1,640 SF



LOWER FLOOR 1,136 SF

