

Sorento

CUSTOM HOMES

Chelsea



🏠 Bungalow

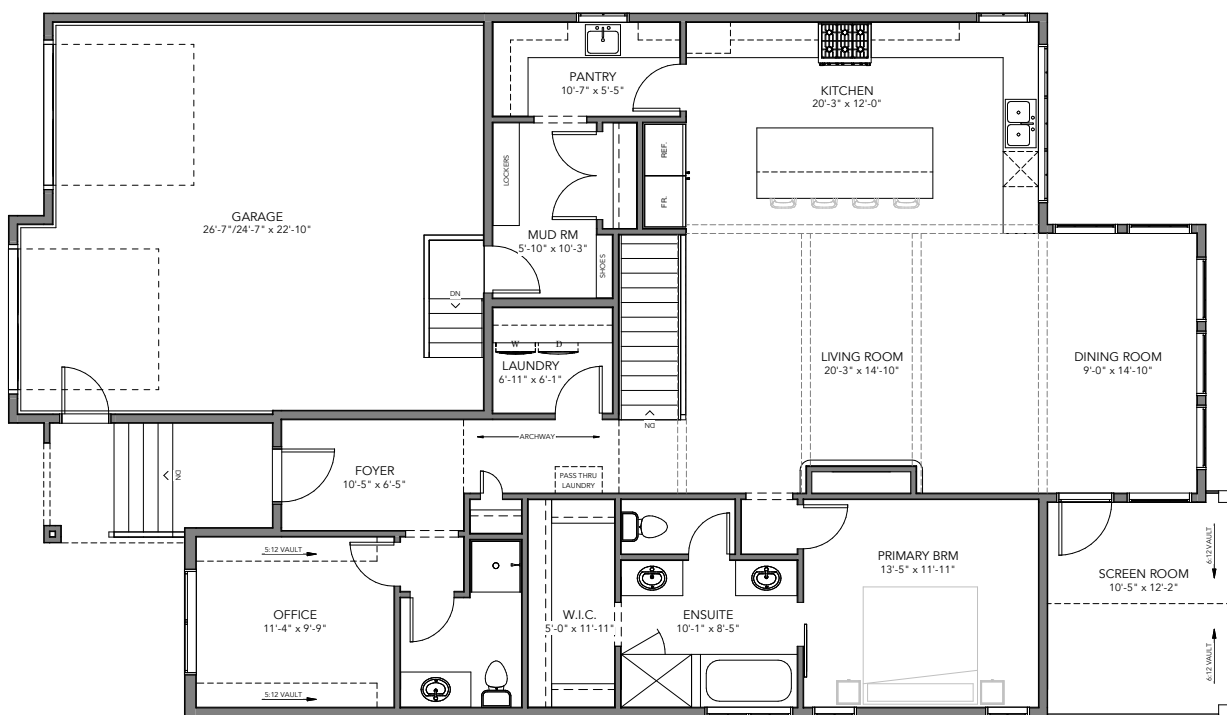
🏠 1,680 SF + BSMT

🛏️ 3/4 Bedrooms

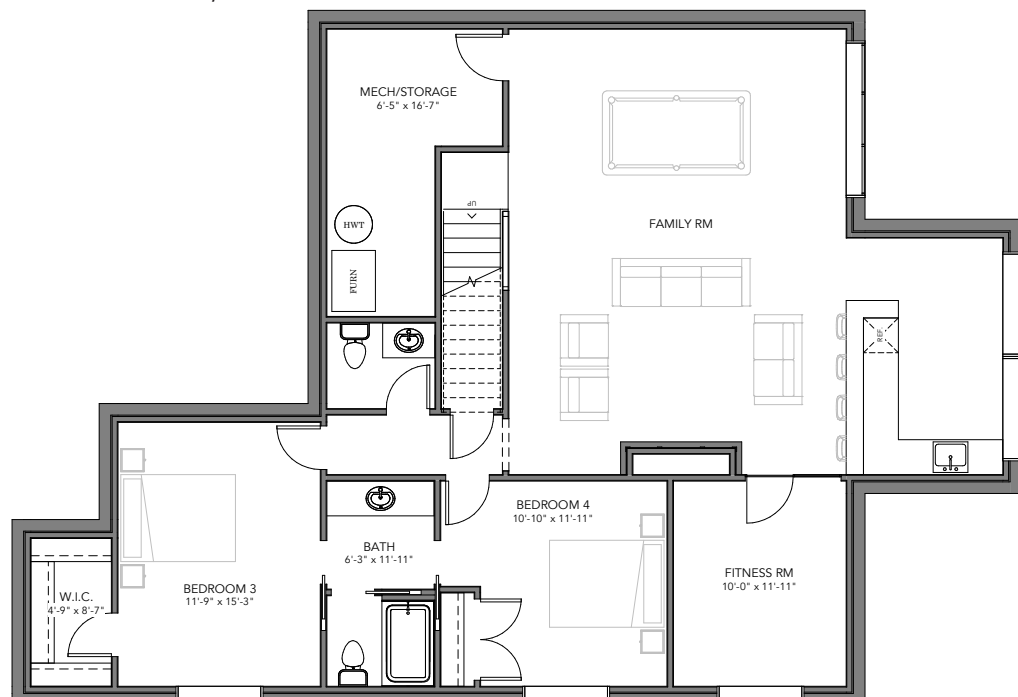
🚿 3.5 Bathrooms

➡️ 40' Wide

- Traditional Exterior with Stone Features
- Double Attached Garage
- 10' Painted Ceilings throughout Main Floor
- Archway featuring three hidden doors
- Large kitchen with bright windows, quartz countertops and oversized island
- Walk-through Pantry to Mud Room
- Wood beam ceiling feature in Living Room
- Gas Fireplace clad with curved tile
- Floor to Ceiling windows in Dining Room
- Primary Ensuite with dual vanities, tiled shower, soaker tub, and large closet
- Enclosed Screen Room
- Second Bedroom/Office and Full Bath on Main Floor
- Large basement Family Room & Wet Bar with Electric Fireplace Feature & Powder Rm
- Two Basement Bedrooms and shared bathroom
- Fitness Room with sliding glass door



MAIN FLOOR 1,680 SF



LOWER FLOOR 1,369 SF

