

Sorento

CUSTOM HOMES



Adrian

🏠 Two-Storey

📏 2,746 SF + BSMT

🛏 5 Bedrooms

🚿 3.5 Bathrooms

📏 40'-44' Wide

▪ Triple Attached Garage

▪ Vaulted ceiling in Living Rm & Bonus Rm with wood beam accents

▪ Oversized Chef's Kitchen and Pantry

▪ Mudroom walk-in closet and bench storage

▪ Plasterwork features throughout

▪ Screen Room with painted T&G ceiling

▪ Bonus Room open to below with built-in homework desks and window seat

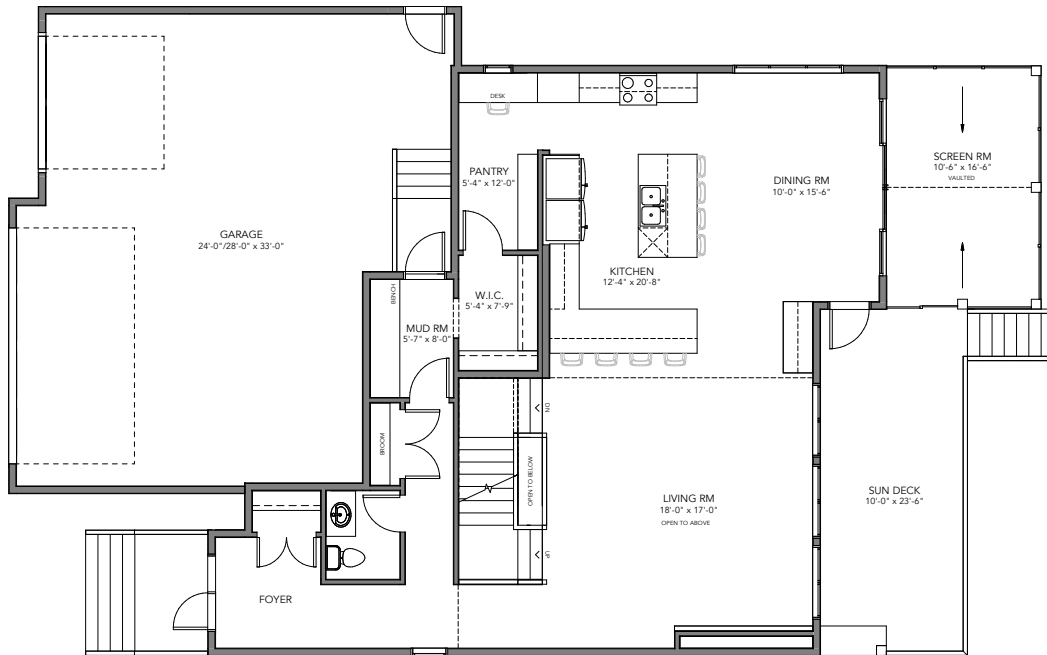
▪ Large primary suite with five piece ensuite, walk-in closet and adjoining laundry room

▪ Second and third bedrooms share a separated bath

▪ Large basement Family Room & Dry Bar

▪ Two large basement bedrooms and shared bathroom

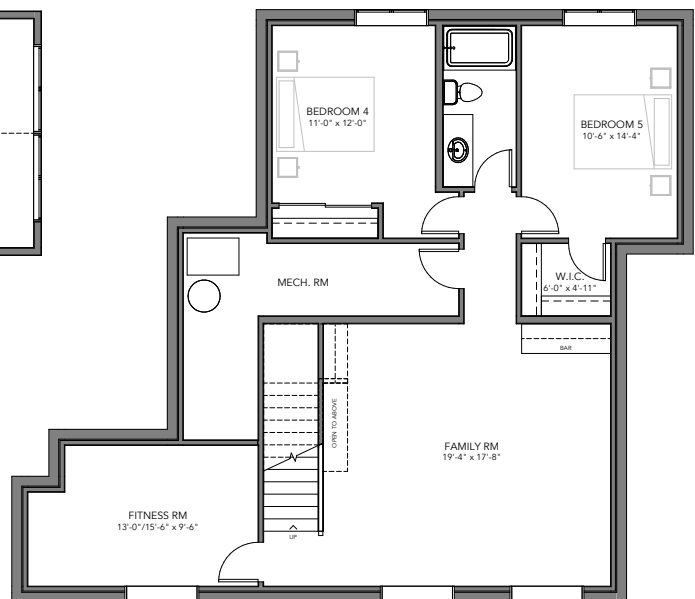
▪ Flex Room for fitness, crafts, playroom, or sixth bedroom



MAIN FLOOR 1,345 SF



UPPER FLOOR 1,401 SF



LOWER FLOOR 1,026 SF

