

Sorento

CUSTOM HOMES

Blake



🏠 Bungalow

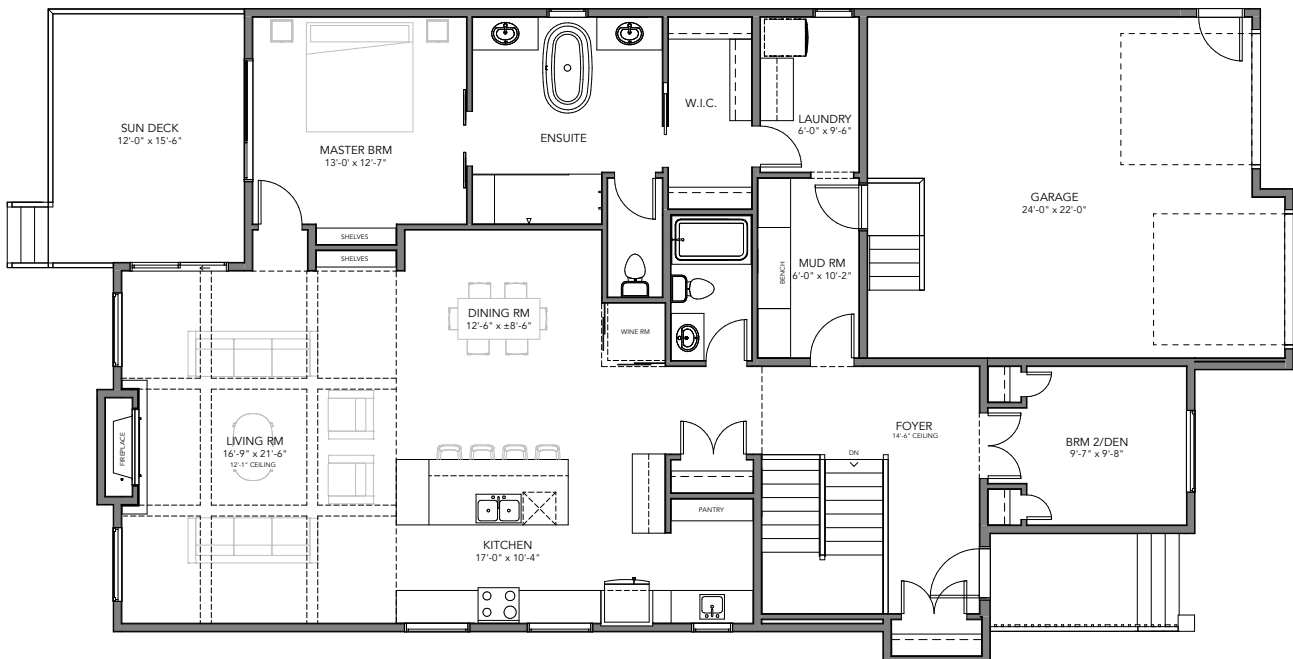
🏠 1,895 SF + BSMT

🛏️ 4 Bedrooms

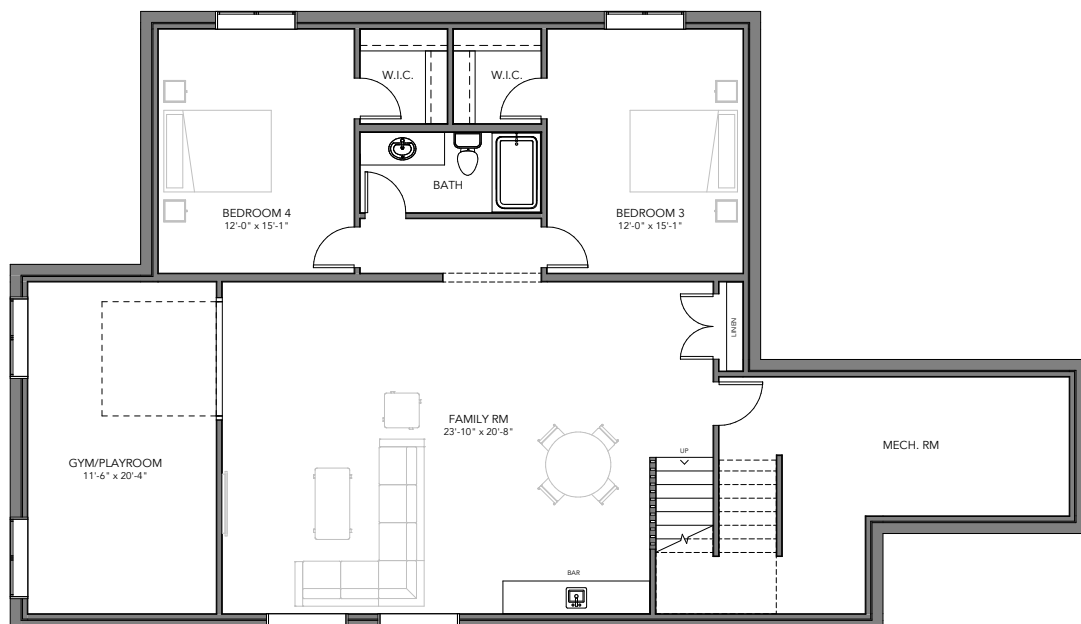
🚿 3 Bathrooms

📏 38' Wide

- Modern Exterior
- Double Attached Garage with transoms above
- High ceiling feature in Foyer
- Large kitchen island with waterfall quartz and wood serving block
- Open walk in pantry with cabinet storage
- Corner glass wine display
- 12' ceiling in Living Room with coffered beam detail and tiled gas fireplace
- Front-facing bedroom or office
- Master Ensuite with curbless tiled shower and free-standing tub.
- Built-in Mud Room bench and cabinets
- Large basement Family Room & Wet Bar
- Two Basement Bedrooms, with walk-in closets and shared bathroom
- Fitness or Play Room enclosed with a garage door feature, potential conversion for a fifth bedroom



MAIN FLOOR 1,895 SF



LOWER FLOOR 1,447 SF

